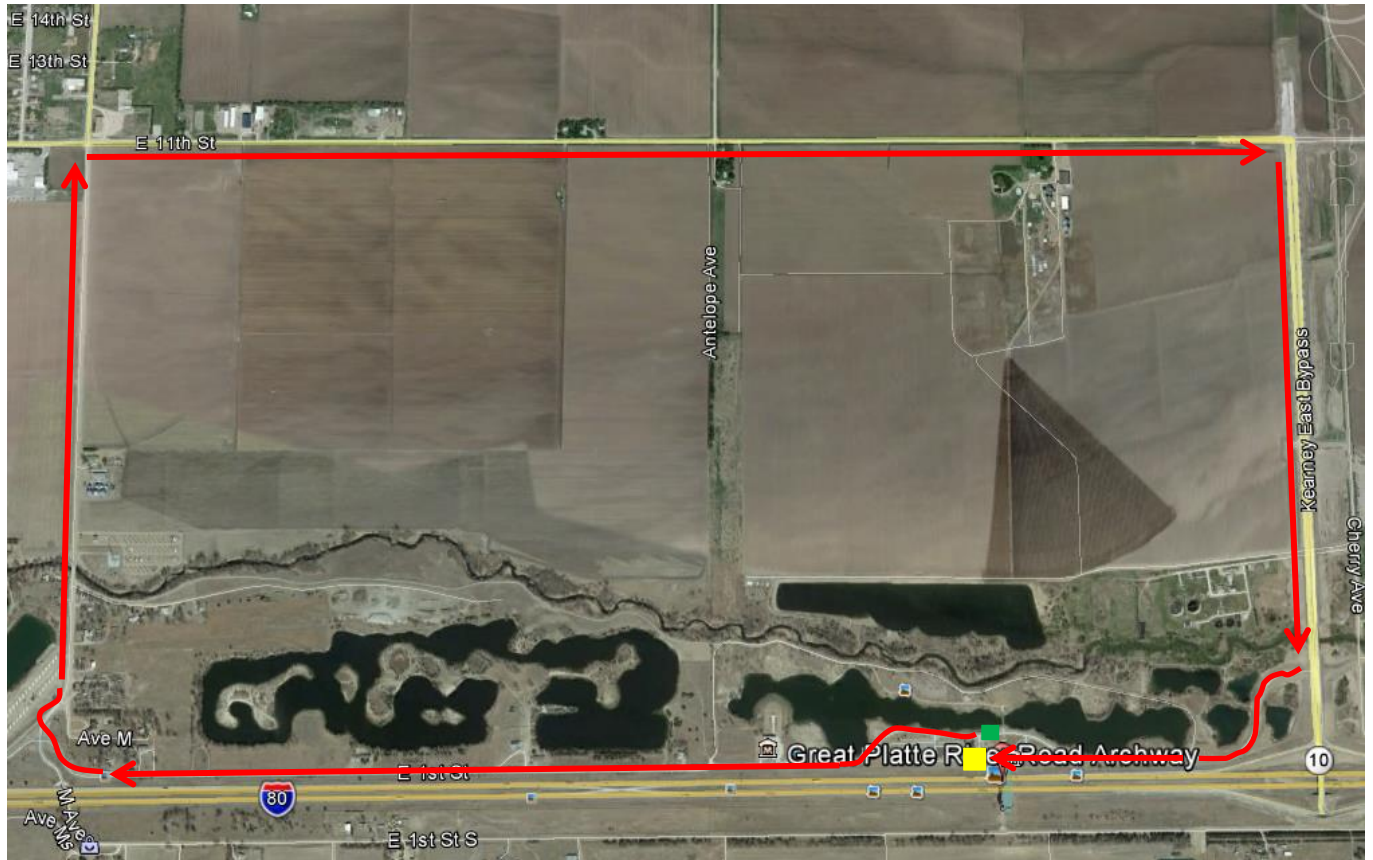


10k, 20k & 40k Cycling Course



The 10k, 20k & 40k Road Races will begin in front of the Archway. The race will head west and turn right on Avenue M. Riders will then turn right onto 11th Street and then take another right onto Kearney East Bypass. Riders will then turn right onto East 1st Street and finish near the start line.

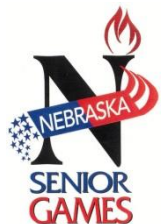
10k = 1 lap

20k = 2 laps

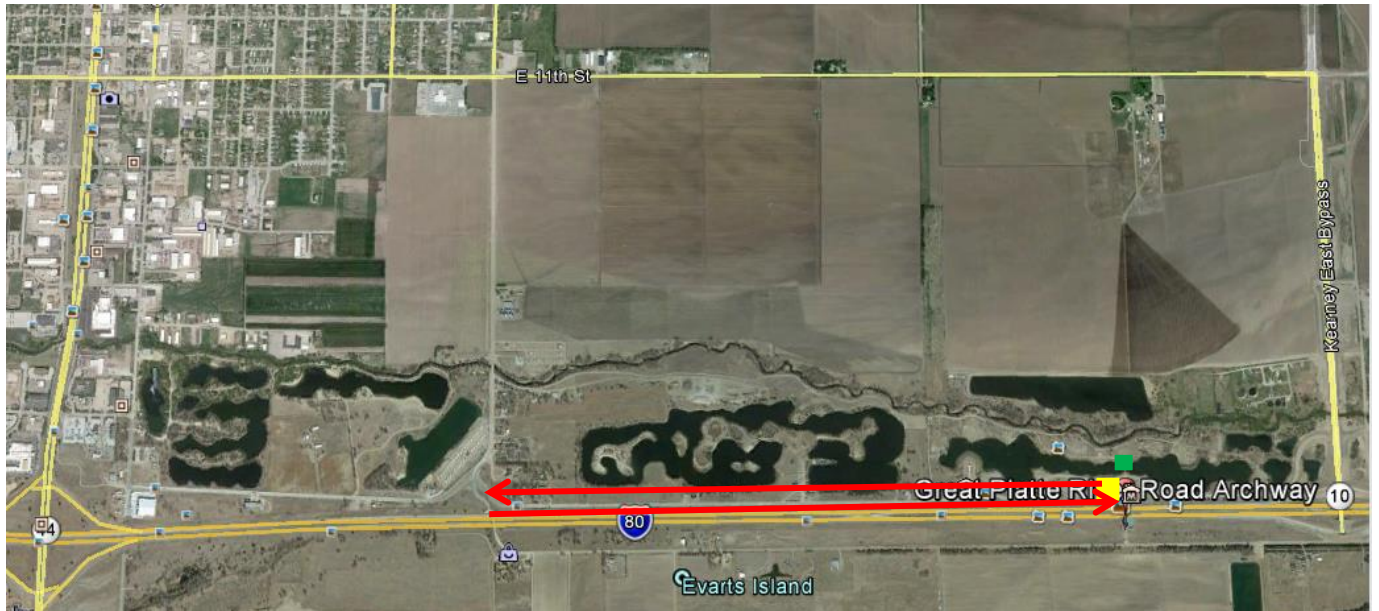
40k = 4 laps

 Parking

 Approximate Start/Finish



5k Cycling Course



The 5k will begin at the Archway. Cyclist will bike to Avenue M (west) and back. Cyclist will have a running start, once they cross the start line, clock will start.

